

# WHAT'S NEW

CoreMedia Content Cloud v10  
CMCC Distribution 10.2001.1

Highlights of

## CoreMedia Content Cloud Distribution 10.2001.1

Highlights described in this section are available in the released products that are part of CoreMedia Content Cloud v10 distribution 10.2001.1. For details of included products and components, please refer to our distribution download site at <http://bit.ly/cmcc-10>.

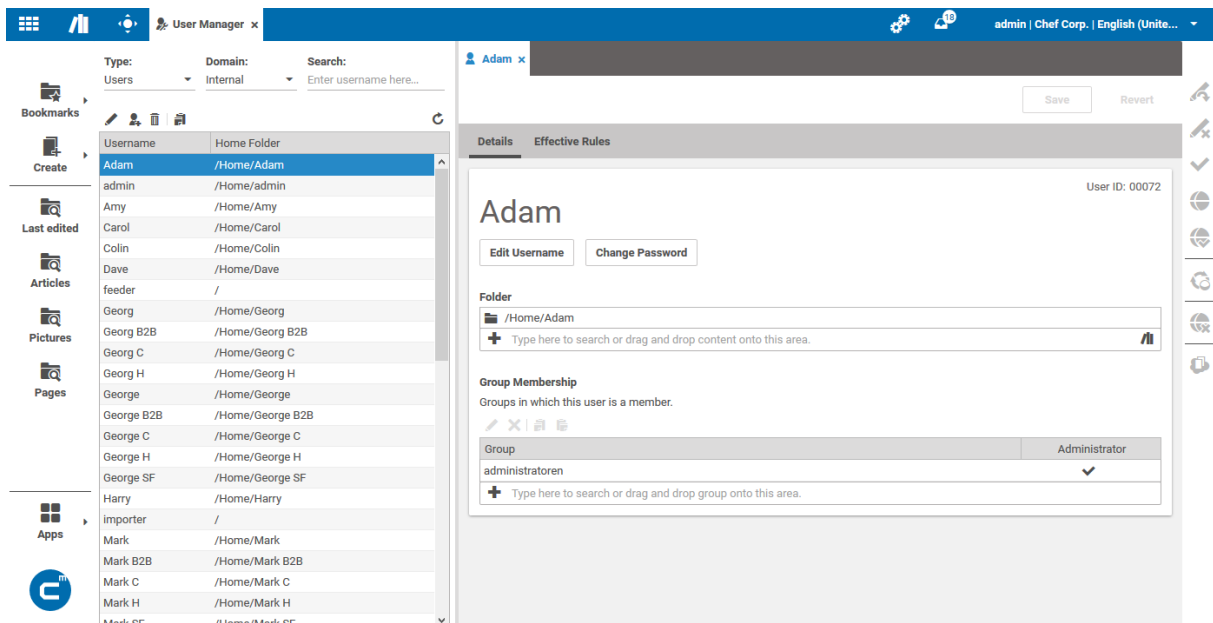
1. Studio: User Management.....	3
2. Content Hub: Offline Robustness .....	5
3. Content Hub: Drag & Drop Content into Linklists .....	6
4. Commerce Hub: HCL e-Marketing Spot Support.....	7
5. Commerce Adapters: HCL Commerce v9 support.....	8
6. CoreMedia Headless Server (CaaS): Remote Link Building .....	9
7. CoreMedia Headless Server (CaaS): Monitoring Support .....	10

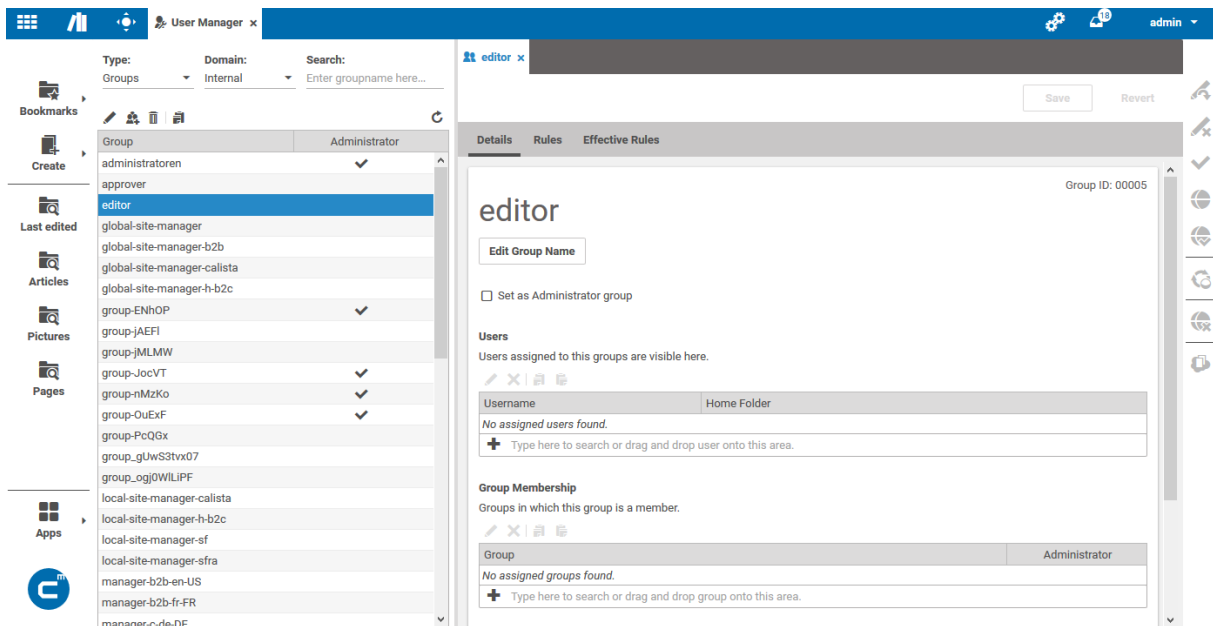
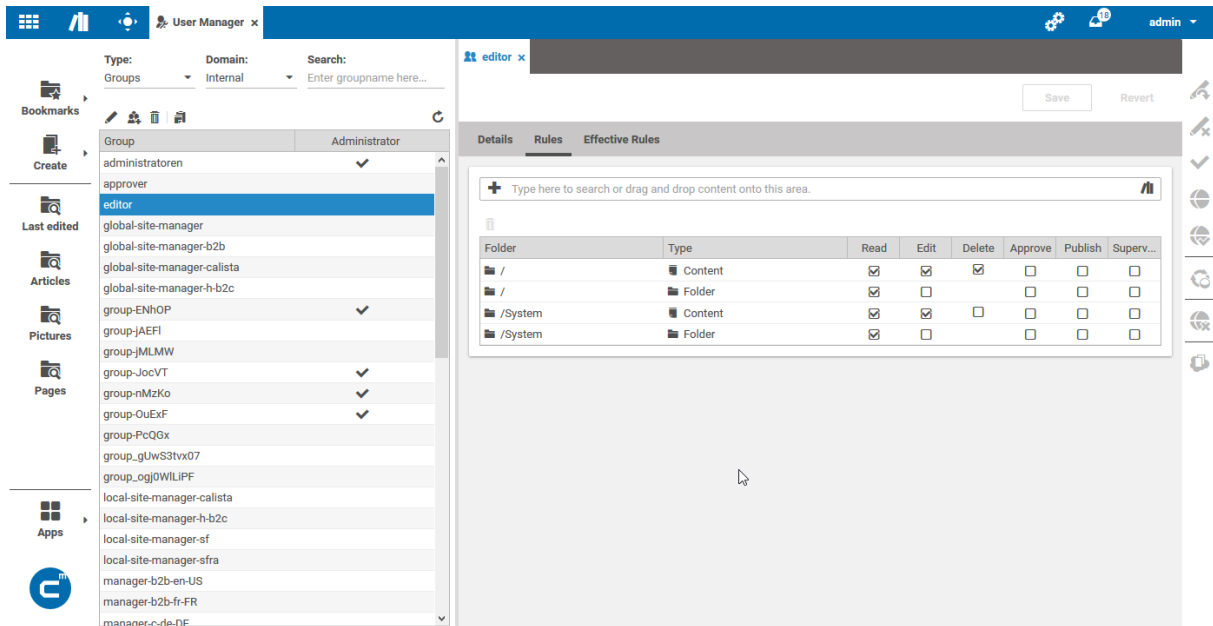
# 1. Studio: User Management

Managing Users, Groups and Rights is now available in CoreMedia Studio.

## Features & Functionalities

- Search users and groups by name or filter by domain in User Management overview
- Create update and delete internal groups and users
- Manage the structure of internal users and groups
- Manage group rights





## Why it Matters

CoreMedia Site Manager has been deprecated, and we are planning to make its functions available in CoreMedia Studio. Providing User Management is the first step on this roadmap.

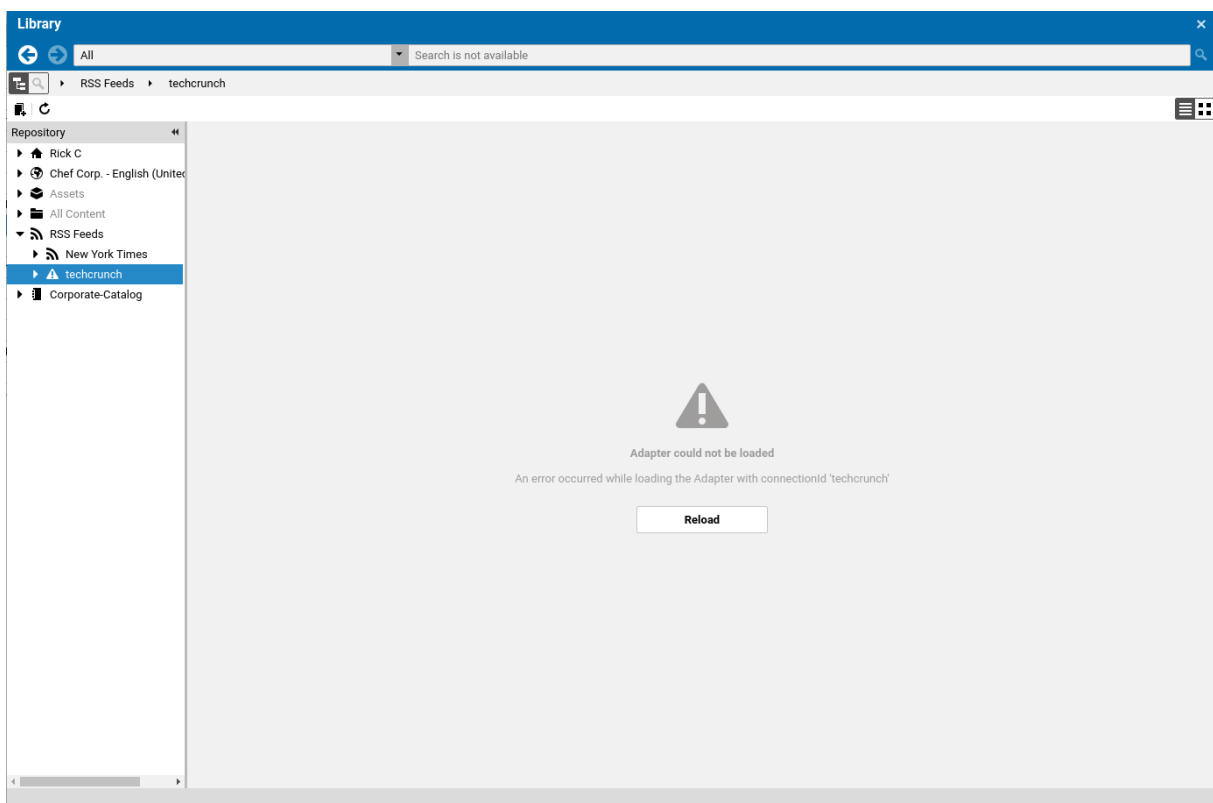
## 2. Content Hub: Offline Robustness

Be independent of other systems and continue working on your content without interruption.

The Content Hub now comes with advanced caching and improved offline robustness so that business users can continue working with Studio without being blocked by timeouts when external systems become unavailable.

### Features & Functionalities

- Caching of Blobs
- Information about the connection status to other systems.  
Adapters can provide custom, detailed status information.
- The Library does not wait for timeouts in case of unavailability or slow connection to external system.



### Why It Matters

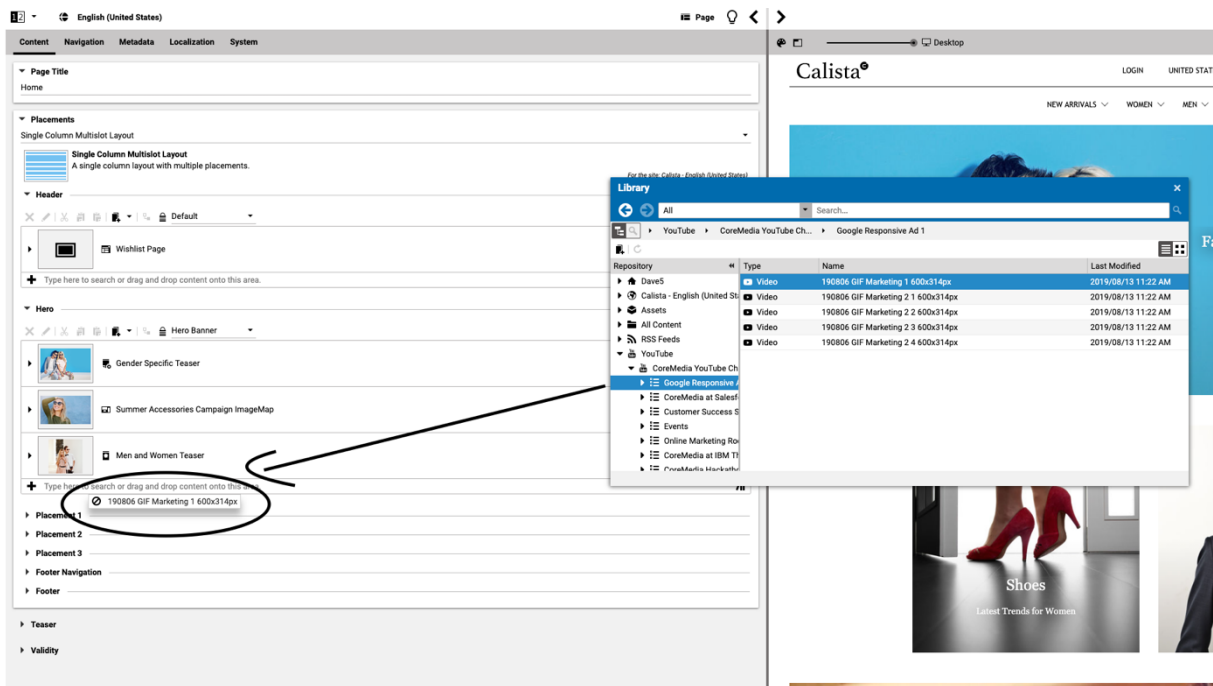
CoreMedia Studio provides a seamless uninterrupted user experience, even if a 3<sup>rd</sup> party system is unreachable, thus enhancing productivity. The improved offline robustness of the Content Hub raises the editorial efficiency.

### 3. Content Hub: Drag & Drop Content into Linklists

Editors can directly drag and drop external content items from the Content Hub into Linklists without the need to manually create CoreMedia reference placeholders first.

#### Features & Functionalities

- Drag and drop items from Content Hub into Linklists.
- Automatic creation of the CoreMedia reference placeholder item in the Linklists.



#### Why It Matters

Business users can seamlessly and efficiently import and use content from the Content Hub in a consistent way as with internal content items from the Library.

## 4. Commerce Hub: HCL e-Marketing Spot Support

The Commerce Hub API and the HCL Commerce Hub Adapter now support browsing and searching for e-Marketing Spots.

### Features & Functionalities

The rendering of e-Marketing Spots is different to the prior solution provided in CoreMedia LiveContext. Instead of retrieving the result of an e-Marketing Spot computation from HCL Commerce via REST API, now only a placeholder is rendered into the fragment responses. This placeholder invokes the standard HCL Commerce EMarketingSpot.jsp to render the results. This change enables the support for more variations of e-Marketing Spots: Especially HTML content with HCL Commerce local paths or variables is now supported. Also, personalization and contextualization (e.g. cross-sell products for currently displayed products) are possible. Validity of Web Activities within e-Marketing Spots placed via CoreMedia fragments are directly evaluated in the HCL Commerce system. In other words, e-Marketing spots in CoreMedia fragments now behave and are rendered like standard e-Marketing spots outside of CoreMedia fragments.

However, this new rendering approach does not work for purely content-led scenarios because no fragments are delivered to the storefront for postprocessing. In hybrid-scenarios like our Calista demo site, e-Marketing Spots can be used in any shop pages that are rendered by commerce system (e.g. category or product detail pages in our Calista site).

### Why It Matters

Bringing the Commerce Hub API to feature parity with the previous LiveContext solution. The placeholder rendering mechanism simplifies integration, and already existing HCL Commerce templates can be re-used.

## 5. Commerce Adapters: HCL Commerce v9 support

HCL Commerce v9 is now the primary supported version for CoreMedia Content Cloud 2001 and future versions. HCL Commerce v8 support is continued.

### Features & Functionalities

Demo data, theme and configuration properties are now configured for HCL Commerce v9 by default. Customers that migrate from an earlier version of CMCC but still use WCS8 can still keep their old data, theme and configuration. New customers that start with CMCC 2001+ and HCL Commerce v8 will need to adapt some configuration.

### Why It Matters

HCL Commerce v9 is already on the market and is expected to be supported for a long time by HCL. New customers start with version 9 by default. Many existing customers migrate to v9 in order to receive frequent bugfixes and maintenance from HCL.



## 6. CoreMedia Headless Server (CaaS): Remote Link Building

The Headless Server can be queried to retrieve links that are generated by a configurable remote system, e.g. a CAE. These links can be used by a client to link that remote content. A new URL handler is introduced at CAE, that handles requests to `/internal/service/url`.

### Features & Functionalities

The URL handler can be called for preview of live URLs by using `/internal/previewhandler` or `/internal/servicehandler` as prefix. Valid parameters are `id`, `siteId`, `contextId` and `view`.



### Why It Matters

The ability to generate links to content served by a CoreMedia CAE enables customers to partially migrate parts of their CAE-based website to a CoreMedia Headless Server-based SPA. This enables a gradual migration path.

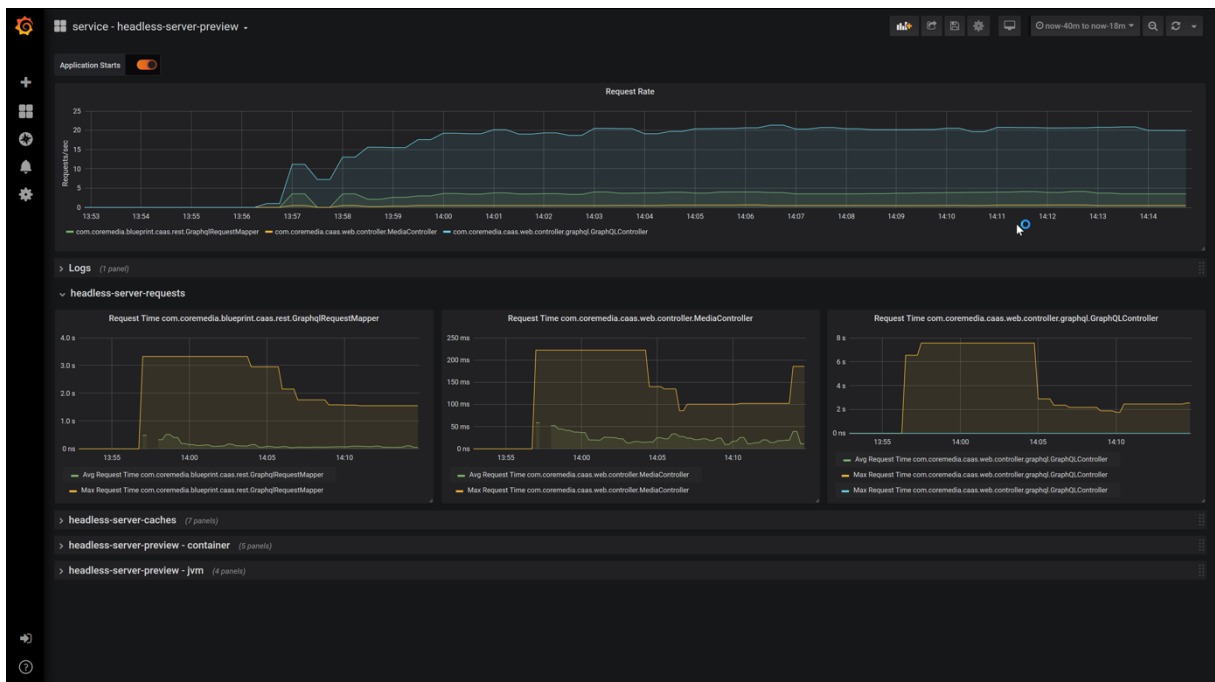
## 7. CoreMedia Headless Server (CaaS): Monitoring Support

Provide end points to monitor key aspects of the CoreMedia Headless Server (CaaS) component.

### Features & Functionalities

The administrators will have the ability to retrieve data to track:

- Request time
- Requests per second
- Cache hits and misses



### Why It Matters

Monitoring and health checks are key for components especially in cloud offerings, allowing administrators to ensure smooth operations.